

Start Early. Finish Strong... School Readiness

Aronda L. Green

District Early Childhood Coordinator

aronda.green@fortbendisd.com

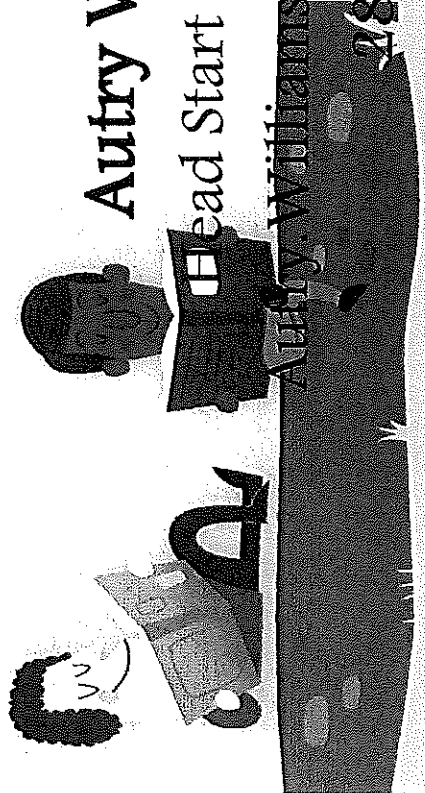
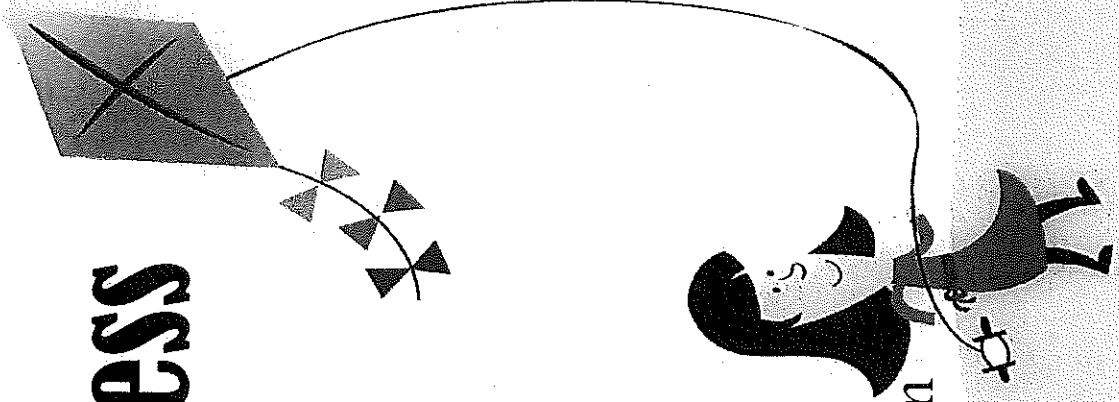
281-634-1239 8446

Autry Williams-Bowers

Head Start Compliance Specialist

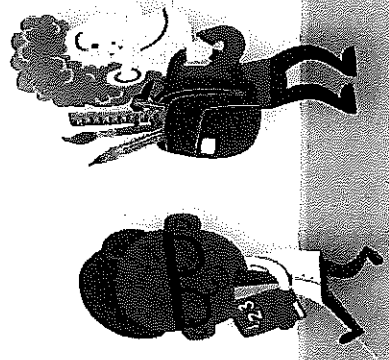
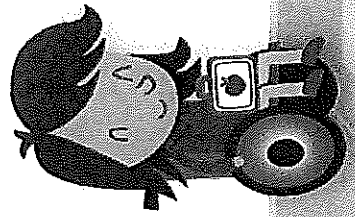
Autry.WilliamsBowers@fortbendisd.com

281-634-6748



Early Childhood Education

- High quality early childhood programs inspire children to become lifelong learners and prepares them for Kindergarten and beyond.
- Teaches students importance of skills needed for academic and social success
- Children are more prepared for kindergarten
- Have better reading and writing skills
- Develop critical thinking skills
- Perform better in grades K-12
- Have better social skills, behavior and conduct



Prekindergarten Eligibility

- Must be four years old on or before September 1, 2014
- Must be a Fort Bend ISD resident, and

And meet one of the following criteria:

- **Limited English proficient** because a language other than English is the primary language spoken in the home. Students qualifying by language will be tested to determine placement in the program, or
- Qualify according to the **Federal Income Eligibility Guidelines**. Parents must bring proof of income (documentation for at least one month of income). Proof of income can include current check stubs, child support statement of payment, SNAP qualification letter, etc., or
- Be **homeless**, or

Have current or previous conservatorship of the **Department of Family and Protective Services**, or

Is the dependent child of an active **U.S. Armed Forces** member, or the dependent of a U.S. Armed Forces member that has been injured or killed while on active duty.



Kindergarten Eligibility

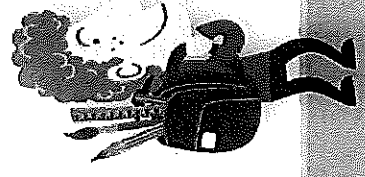
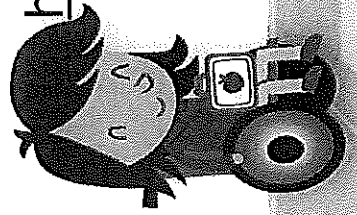
- Must be five years old on or before September 1, 2014
- Must be a Fort Bend ISD resident

Parent Guide with Milestones: Mathematics, Science and Fine and Gross Motor Skills

<http://www.fortbendisd.com/cms/lib09/TX01917858/Centricity/Domain/74/Parent%20Guide%2013%2014.pdf>

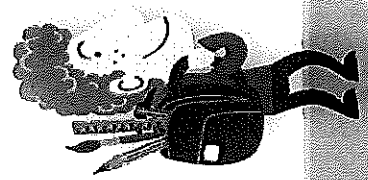
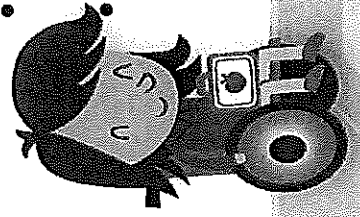
Curriculum

<http://www.fortbendisd.com/Page/588>



Registration Requirements

- Certified Birth Certificate
- Original Social Security card for the child
- Parent/Guardian appropriate photo ID such as a passport, driver's license, or government issued photo id
- Proof of residency such as deed, lease, or current month's mortgage payment booklet
- One current utility bill
- Child's health record/immunization record. Immunization requirements.
- Proof of income
- **Department of Family and Protective Services verification letter of prekindergarten eligibility**

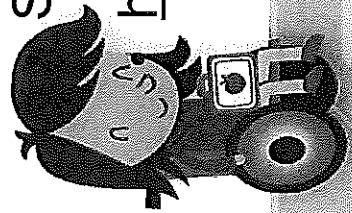


Preschool Program for Children with Disabilities (PPCD)

- A special education preschool program is offered to students with identified developmental delays who are three years of age to kindergarten age.
- ECI-early childhood intervention services
- Early Childhood Screening/Child Find. All of the campuses in Fort Bend ISD offer a comprehensive system of “Child Find” activities. These activities are designed to identify all individuals ages three – 21 who may or may not be in school and who have a disability as defined in the Individuals with Disabilities Education Act of 2004.

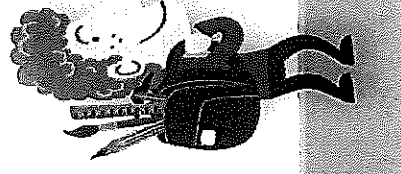
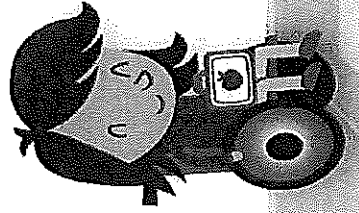
Special Education Department.

<http://www.fortbendisd.com/Page/185>

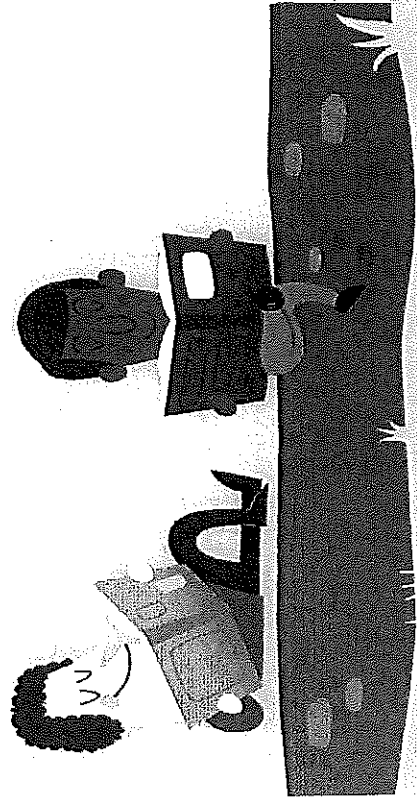
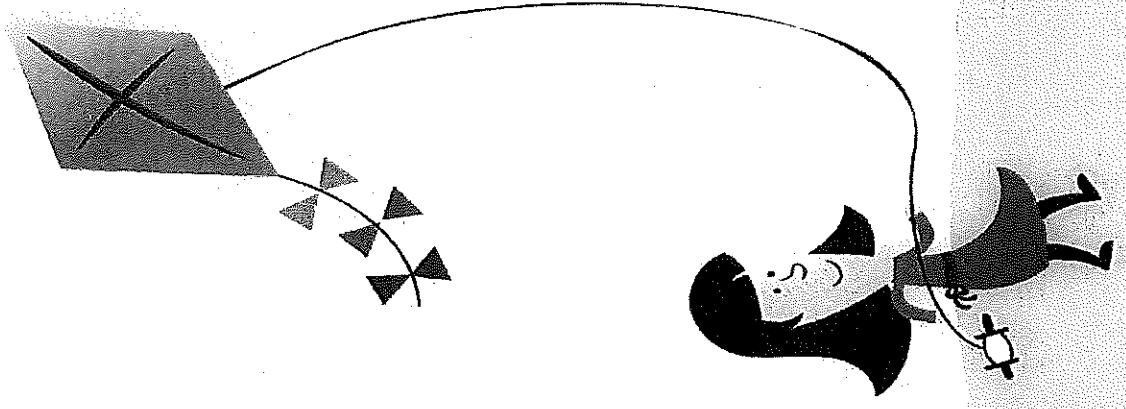


Response to Intervention (RTI)

- Students having difficulty in the regular classroom should be considered for tutorial, compensatory and other academic or behavior support services that are available to all students including a process based on Response to Intervention (Rti).
- The implementation of Rti has the potential to have a positive impact on the ability of local education agencies to meet the needs of all struggling students.
- All students ages three through 21 who are suspected of having a disability may be referred for SE evaluation.
- School personnel, parents or guardians, physician, community agencies, or other appropriate individuals may initiate a referral for special education evaluation.



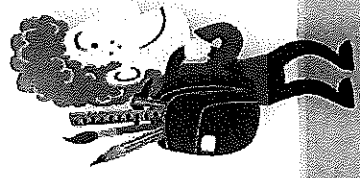
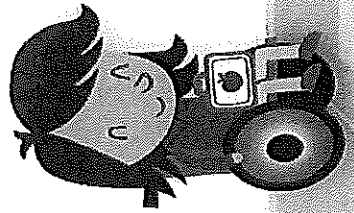
Head Start & Early Head Start Requirements



William Smith Sr. Tri-County Child Development Council Inc.

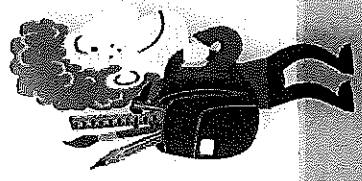
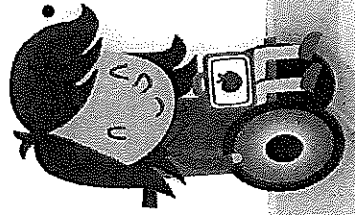
Vision

- **Promote child's cognitive, social, emotional as well as physical growth in an engaging, child initiated, and developmentally appropriate environment.**
- **Increase parental engagement through supported activities and in collaboration with family engagement specialist**
- **We focus on readiness skills based on each child's individual developmental level**



Required Documents for Registration

- Proof of Income
- Birth Certificates
- Proof of Guardianship
- Proof of Address (State DL/Identification & Utility Bill)
- Social Security Cards
- Health Insurance Card
- Current Immunization Records
- Proof of Disability/Health Documentation (if applicable)
- Current Physical/Dental Exams
- Proof of Government Assistance (if applicable)

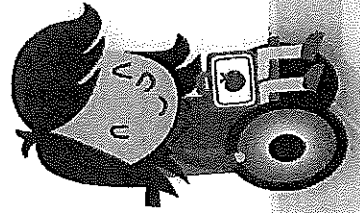


Eligibility

Head Start

- Must be three years old by September 1
- Qualify according to the **Federal Income Eligibility Guidelines**
- Must reside in prospective school district
- Children in foster care, homeless children categorically eligible for services regardless of income

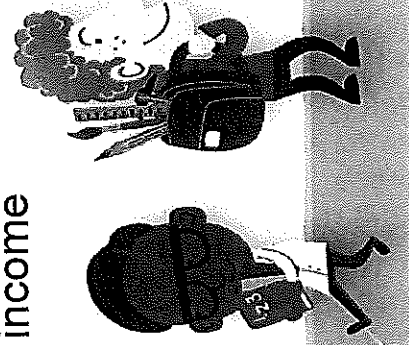
- **Availability**



Early Head Start

- Must be six-weeks old by September 1
- Qualify according to the **Federal Income Eligibility Guidelines**
- Must reside in prospective school district
- Children in foster care, homeless children categorically eligible for services regardless of income

- **Availability**



William Smith Sr. Tri-County CDC, Inc.

Resources

- <http://www.wsstricounty.org>
- <http://www.txhsa.org>

